

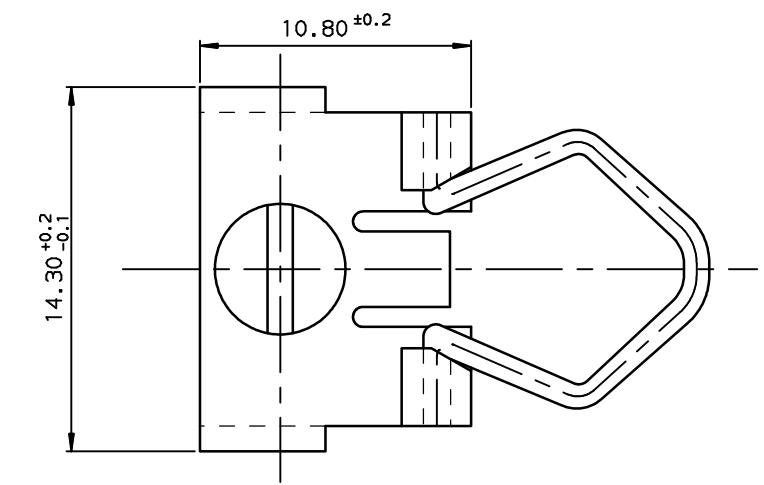
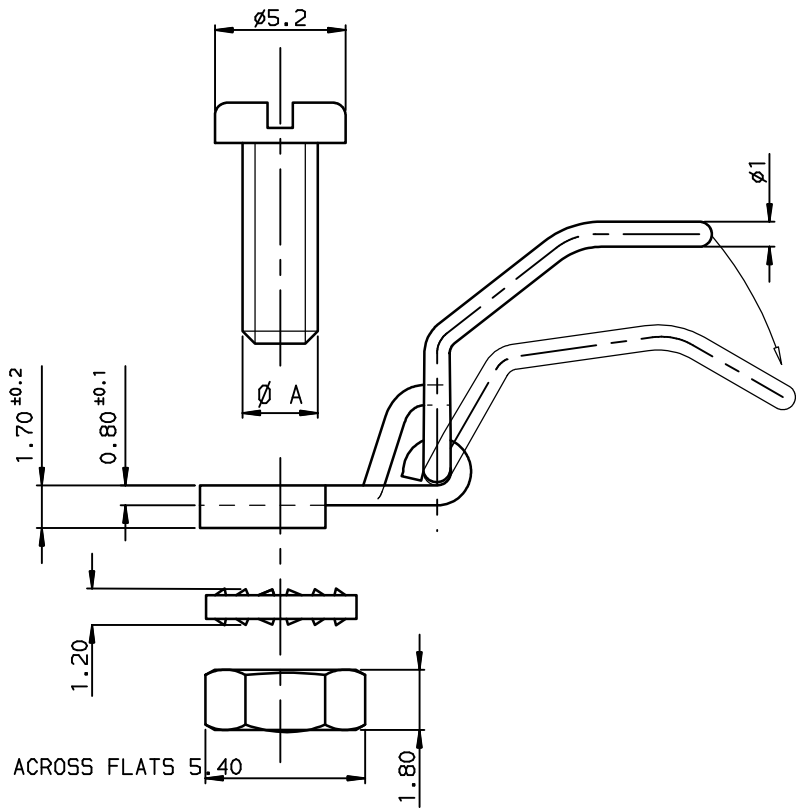
MATERIAL AND FINISH

BRACKET:stainless steel,passivated  
 SCREW:steel, passivated zinc  
 NUT:steel, passivated zinc  
 LOCK WASHER:steel, passivated zinc  
 LOCK SPRING:stainless steel, passivated

|             |          |           |
|-------------|----------|-----------|
| 86552100LF  | M 3      | per 2     |
| 86552098LF  | UNC 4.40 | per 100   |
| PART NUMBER | ∅ A      | PACKAGING |

NOTE1:RoHS INFORMATIONS

- The "LF" product meets European union Directives and other country regulations as described in GS-22-008.
- The product is not intended to be exposed to a manufacturing solder process.
- Plating: Zinc Cr3+, white color.
- Packaging spec: see GS-14-920.



European Views

| rev | ecn no    | dr  | date       |
|-----|-----------|-----|------------|
| A   | L505-0123 | LGO | 2006/01/12 |
| B   | L506-0095 | LGO | 2006/06/23 |
| -   | -         | -   | -          |
| -   | -         | -   | -          |
| -   | -         | -   | -          |
| -   | -         | -   | -          |

|                    |          |                                       |                                   |                       |
|--------------------|----------|---------------------------------------|-----------------------------------|-----------------------|
| www.fciconnect.com |          | surface<br>ISO 1302 ✓                 | tolerance std<br>ISO 406 ISO 1101 | projection<br>mm      |
|                    |          | TOLERANCES UNLESS OTHERWISE SPECIFIED |                                   |                       |
| Dr                 | GOISNARD | 2006/01/12                            | ANGULAR                           | size A3               |
| Eng                | PESSON   | 2006/01/12                            | LINEAR                            | Scale 5               |
| Chr                | LEGARE   | 2006/01/12                            | 0.xx' ±2'                         | ECN L506-0095         |
| Appr               | LEGARE   | 2006/01/12                            | Product family                    | Spec ref -            |
| <b>FCI</b>         |          | title<br>LEVER LOCKS MALE             |                                   | Rev. B                |
|                    |          | SHELL 9-15-25-37                      |                                   | chg no C01-8655-1633  |
|                    |          | catalog no -                          |                                   | CUSTOMER sheet 1 of 1 |

REV F - 2006-04-17